

|  |   |
|--|---|
| 1 QtOctave binaries for Linux.....         | 1 |
| 2 QtOctave and Gnome.....                  | 1 |
| 3 QtOctave and KDE.....                    | 2 |
| 4 Setting icons for QtOctave binaries..... | 4 |

## 1 QtOctave binaries for Linux.

QtOctave is a front-end user interface for the Octave high-level language, primarily intended for numerical computations similar to Matlab.

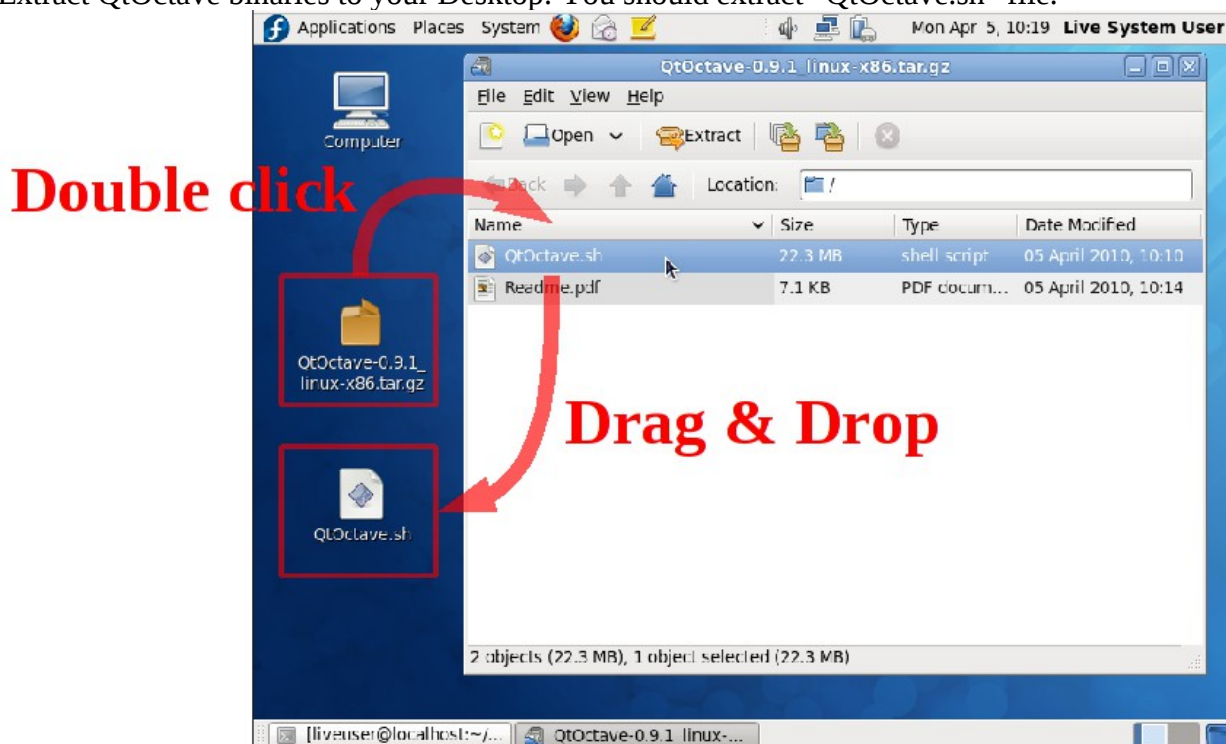
It simplifies the use of Octave for user who are not familiar with the original, command line based version of Octave.

This binaries should work in most of Linux distributions.

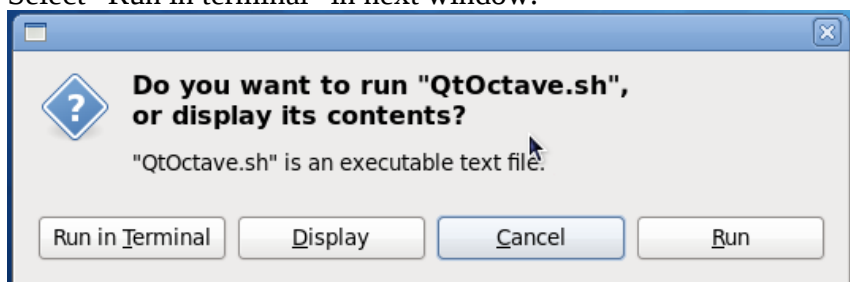
Follow next instructions:

## 2 QtOctave and Gnome.

1. Extract QtOctave binaries to your Desktop. You should extract “QtOctave.sh” file.



2. Double click over “QtOctave.sh”.
3. Select “Run in terminal” in next window.



QtOctave will start.

### 3 QtOctave and KDE.

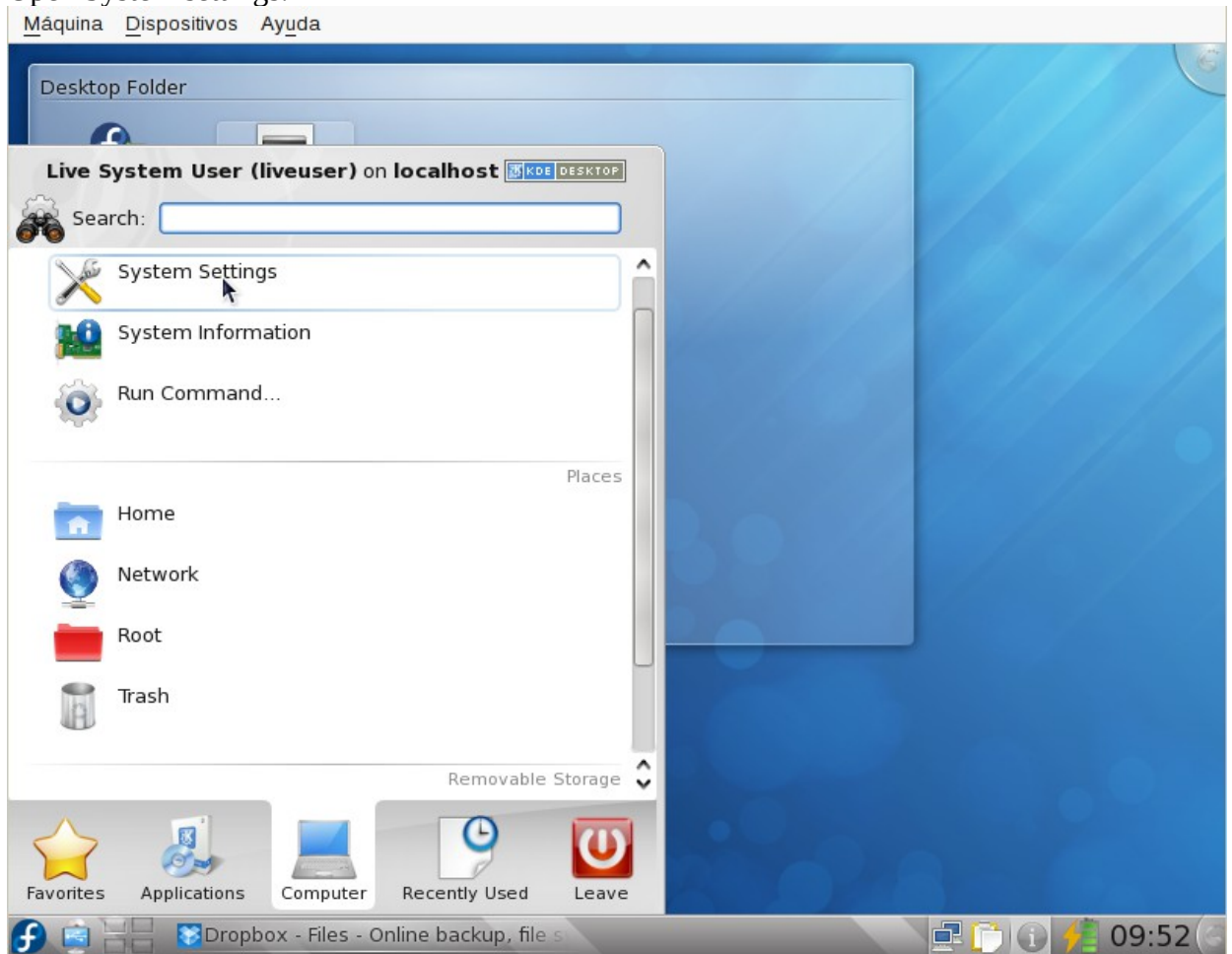
1. Extract QtOctave binaries to your Desktop. You should extract “QtOctave.sh” file.
2. Double click over “QtOctave.sh”.

If it doesn't work:

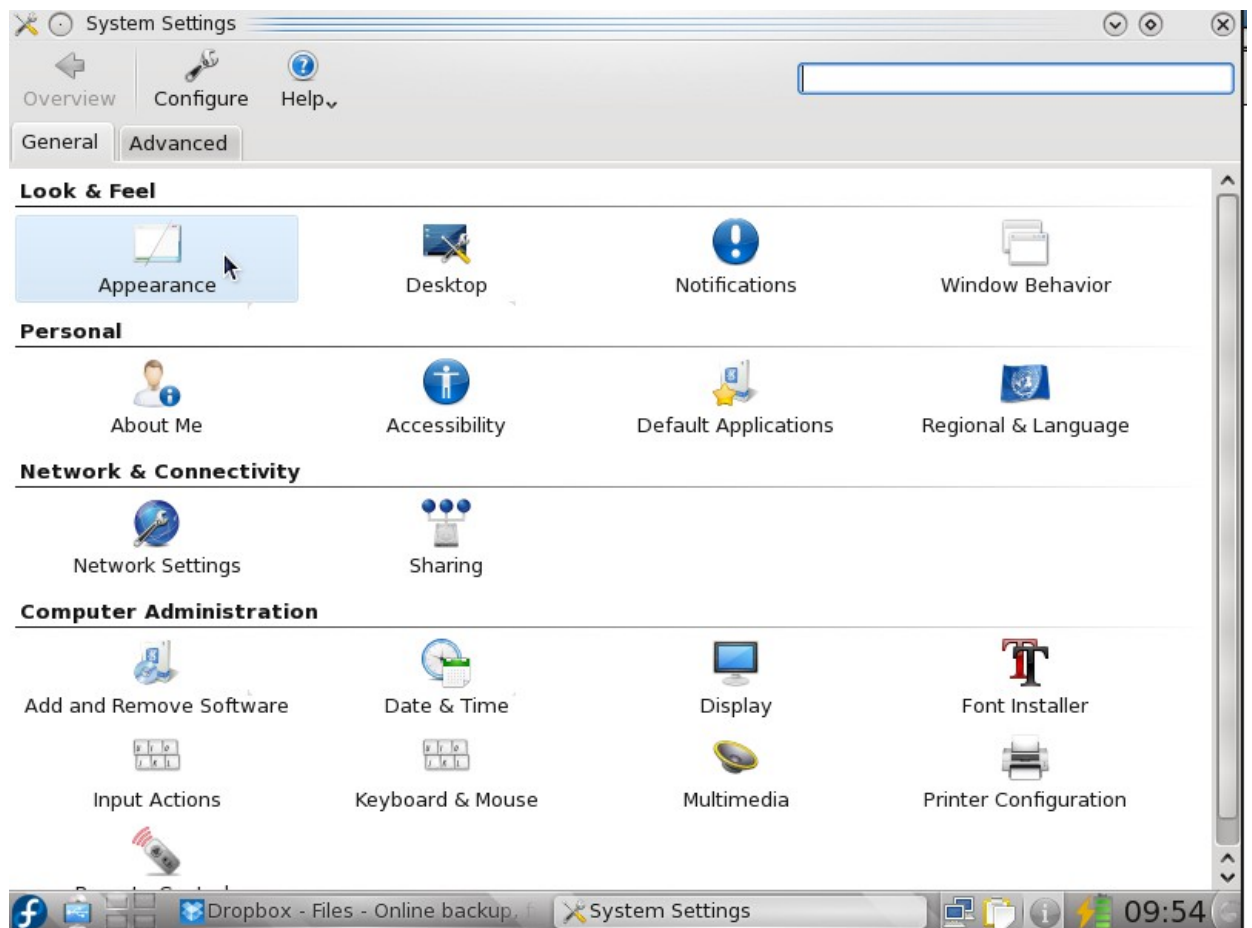
**Important: Some themes of KDE doesn't work with this binaries of QtOctave. For example, theme “Oxygen” sometimes doesn't work. Try to change KDE theme. Theme “Plastique” should work properly.**

To change KDE theme:

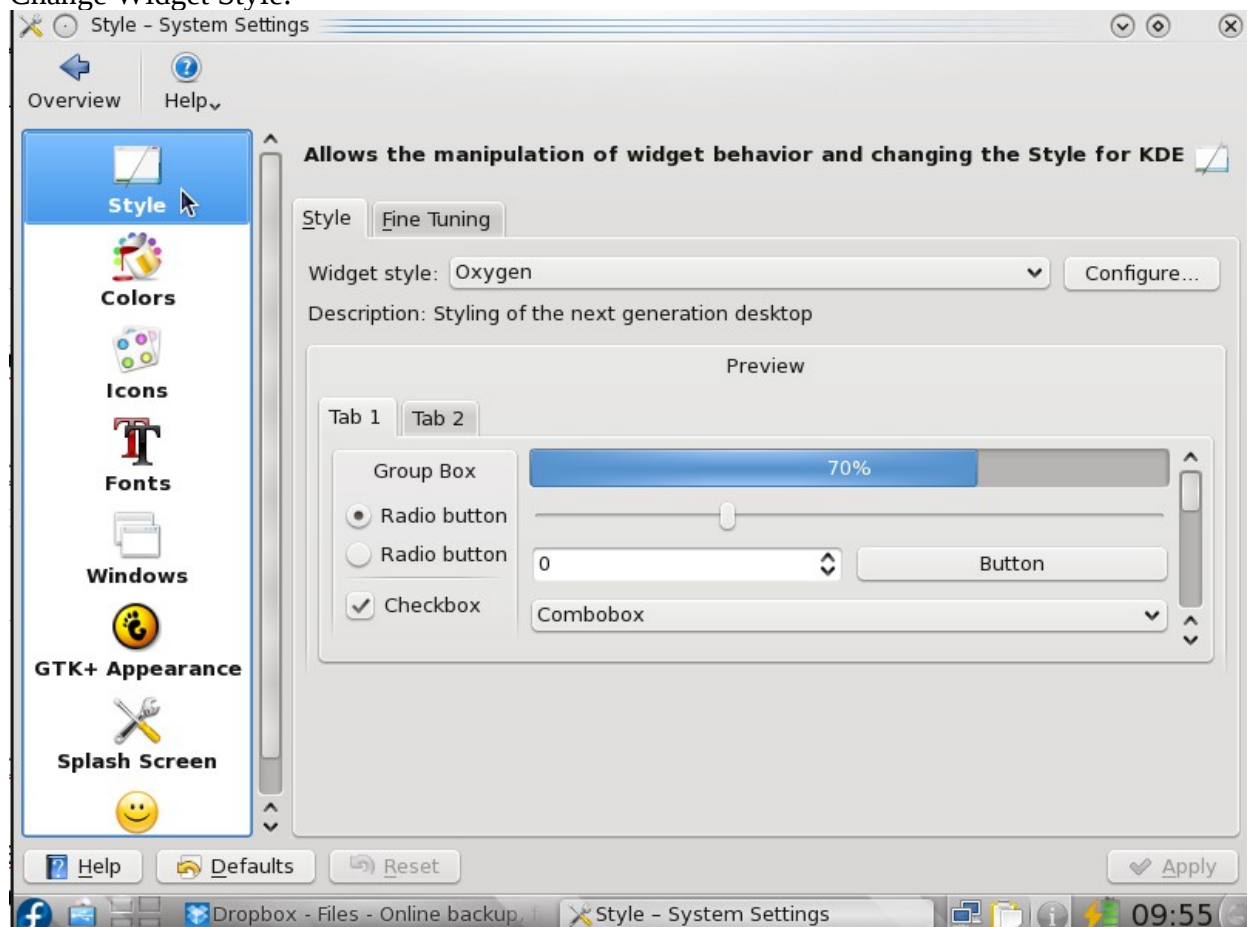
1. Open System settings:



2. Select Appearance:



### 3. Change Widget Style:

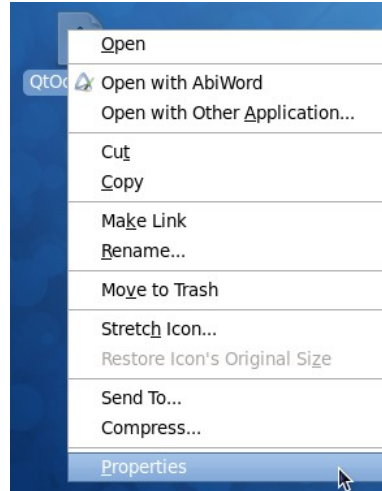


## 4 Setting icons for QtOctave binaries.

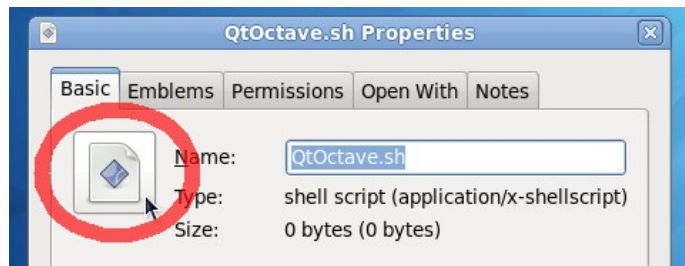
You can set an icon for your “QtOctave.sh”. You must extract “icon-qt octave.png” or find another icon.

Then:

1. Right click over your “QtOctave.sh” and select Properties:



2. Click over icon:



3. Finally, select your custom icon.